

Frequently Asked Questions

How is the project funded?

This project has a combination of committed funds from Charleston County, Charleston Area Transportation Study (CHATS) and the Town of Mount Pleasant. Taxpayers voted in 2016 to increase Charleston County's sales tax and as a result, Highway 41 was allotted \$130 million of sales tax funding to fully fund the proposed improvements. Additionally, the CHATS Transportation Improvement Program (TIP) has allocated two million dollars for this project.

How will I know if my property will be impacted by the project?

Directly impacted landowners will be identified and contacted when a recommended preferred alternative is selected for this project.

What will you do to reduce the noise in the corridor?

Noise impacts are key factors that will be evaluated during the environmental review process. Data collected will be evaluated and mitigation measures, such as noise abatement, will then be considered based on physical or environmental constraints, cost effectiveness, and the viewpoints of the local community and residents.

What is NEPA?

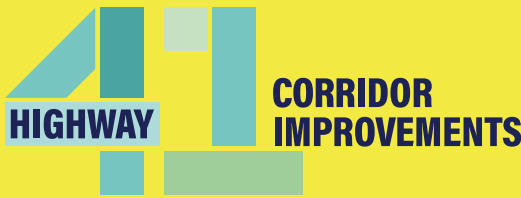
NEPA stands for the National Environmental Policy Act process. Under the NEPA process, an extensive environmental review must take place in order to complete a rigorous analysis of the project area and to examine reasonable alternatives for the improvements. The environmental review is done in order to avoid, minimize or mitigate environmental impacts and to ensure public participation is incorporated into the decision making process. Public input is critical during the environmental review process to provide important insight to Charleston County as the project plans and scope are refined.

Will the project address safety concerns? If so, how?

During the development of this project, safety concerns will be addressed through the implementation of current design standards, the addition of turn lanes, and implementation of pedestrian and bicycle accommodations.

Will pedestrian and bicycle access be accommodated?

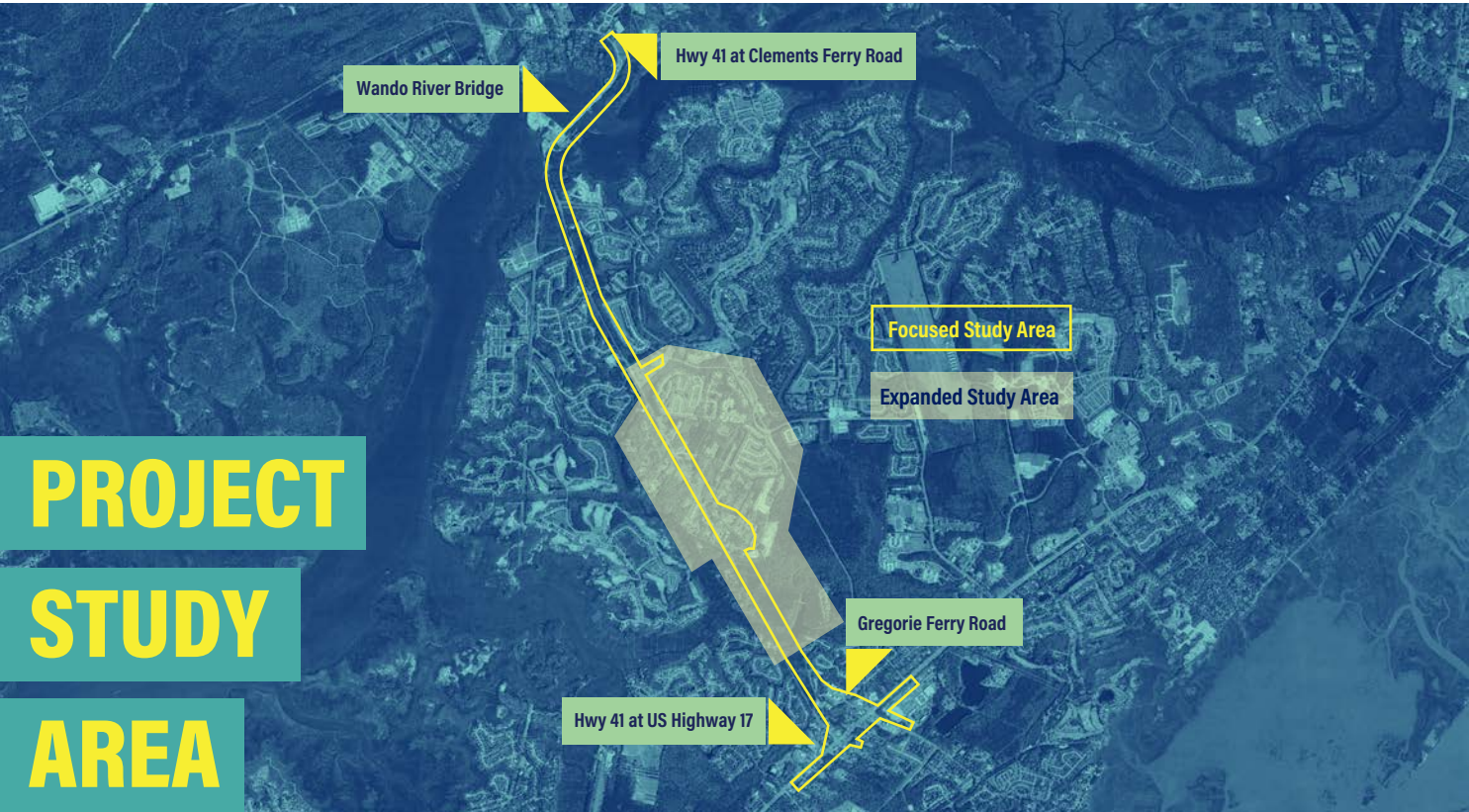
Improved access for pedestrians and bicyclists will be considered and evaluated in the project development process in order to provide safer options and more connectivity for residents.



WELCOME!

The purpose of today's meeting is to:

- Introduce the project, discuss the environmental review process, and present next steps.
- Conduct scoping: take your feedback and define the focus of the study.
- Answer questions and gather public feedback.



Please start the meeting by viewing the Navigating the NEPA Process video and then visiting the open house where you can speak with members of the project team and leave a comment.

Project Goals



Improved capacity along the corridor.



Improved safety for bicyclists, pedestrians and commuters.



Improved capacity at the intersection of Highway 41 and Highway 17.



The completion of the Gregorie Ferry Road connector.

STAY INFORMED



Visit:
www.Hwy41SC.com



Email us to leave comments or
join the project mailing list:
Hwy41SC@gmail.com



Leave a message
for the project team:
843-972-4403



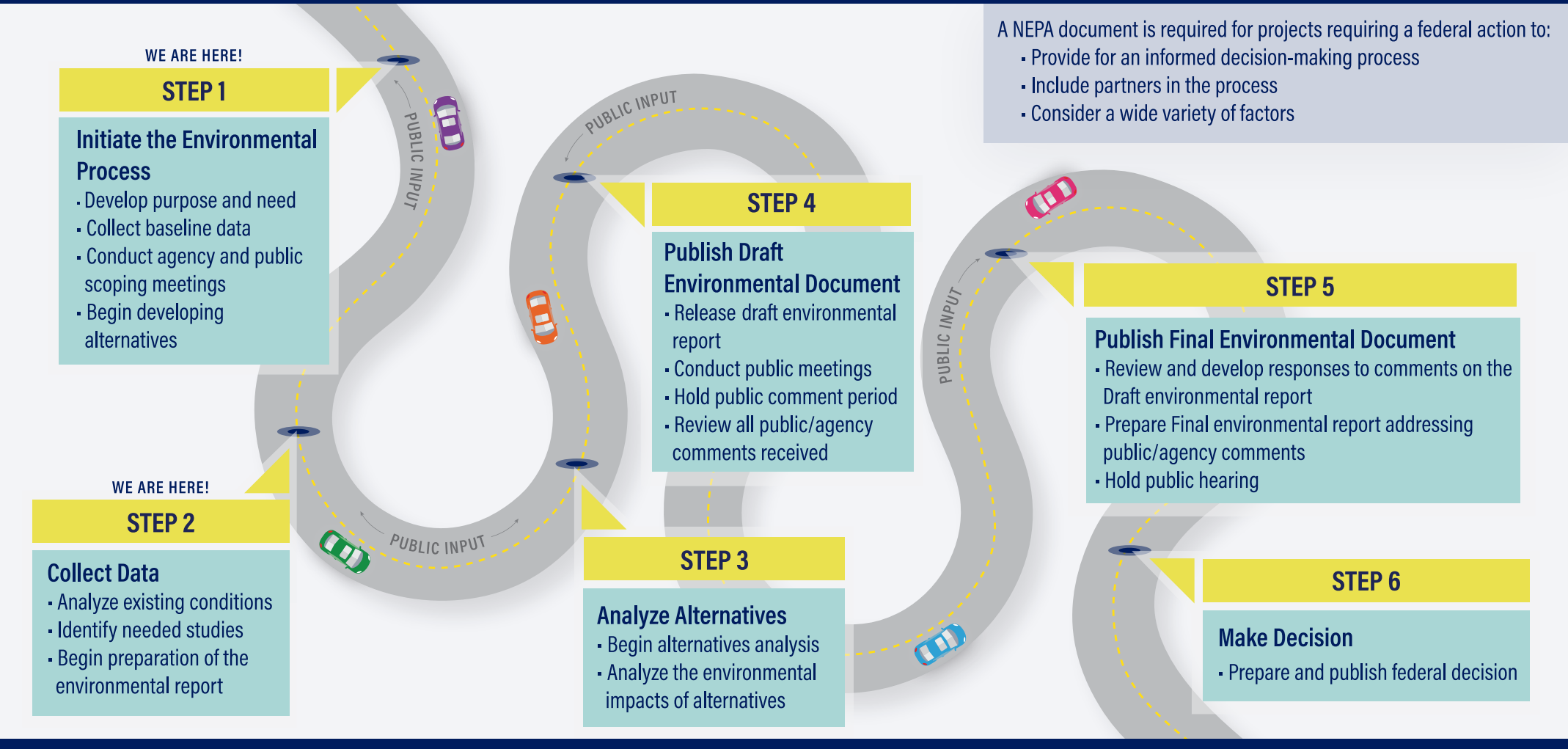
Follow Charleston County
 



National Environmental Policy Act (NEPA)

A NEPA document is required for projects requiring a federal action to:

- Provide for an informed decision-making process
- Include partners in the process
- Consider a wide variety of factors



Factors examined in the environmental review:

- AIR QUALITY
- ARCHITECTURAL/ ARCHAEOLOGICAL RESOURCES
- BUSINESSES
- CEMETERIES
- CHURCHES, SCHOOLS, PARKS
- CONSTRUCTION FEASIBILITY
- HISTORIC/CULTURAL RESOURCES
- NEW/PLANNED DEVELOPMENTS
- NOISE
- COSTS
- ENDANGERED SPECIES
- EXISTING/PLANNED UTILITIES
- FARMLANDS
- FLOODPLAINS
- HAZARDOUS MATERIALS
- RESIDENTIAL AREAS
- STATE/FEDERAL LANDS
- WETLANDS/ WATERWAYS

Navigating the NEPA Process

As part of the National Environmental Policy Act (NEPA) process, an extensive environmental review must take place before a project requiring a federal action can be designed and constructed. The environmental review is done in order to avoid, minimize or mitigate environmental impacts and to ensure public participation is incorporated into the decision making process. Public input is critical during the environmental review process to provide important insight to Charleston County as the project plans and scope are refined.

Scoping During the NEPA Process

We conduct scoping to take your feedback and define the focus of the study.

Scoping is a process that:

- Involves the public and federal, state and local agencies
- Identifies issues in the environmental document
- Develops and evaluates alternatives in the development phase
- Defines the focus of the study

Scoping identifies:

- Transportation deficiencies
- Study boundaries
- Reasonable alternatives
- Agency roles
- Environmental factors
- Permits

Phase I Schedule

