



# Community Meetings

September 20-22, 2017



Wando River Bridge

Hwy 41 at Clements Ferry Road

Focused Study Area

Expanded Study Area

Gregory Ferry Road

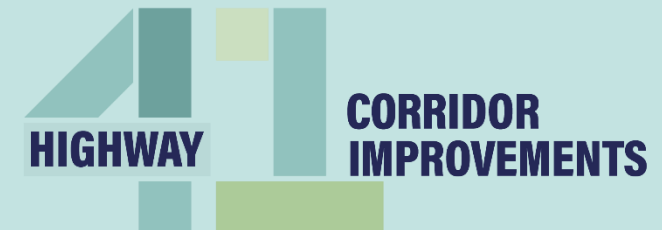
Hwy 41 at US Highway 17

**PROJECT  
STUDY  
AREA**



# Project Goals

- Improved capacity along the corridor.
- Improved safety for bicyclists, pedestrians and commuters.
- Improved capacity at the intersection of Highway 41 and Highway 17.
- The completion of the Gregory Ferry Road connector.



# Project Phases

## PHASE 1

- Introduction of the Project Letter of Intent
- Traffic Analysis and Field Data Collection
- Development of Conceptual Alternatives
- Determine NEPA Class of Action

## PHASE 2

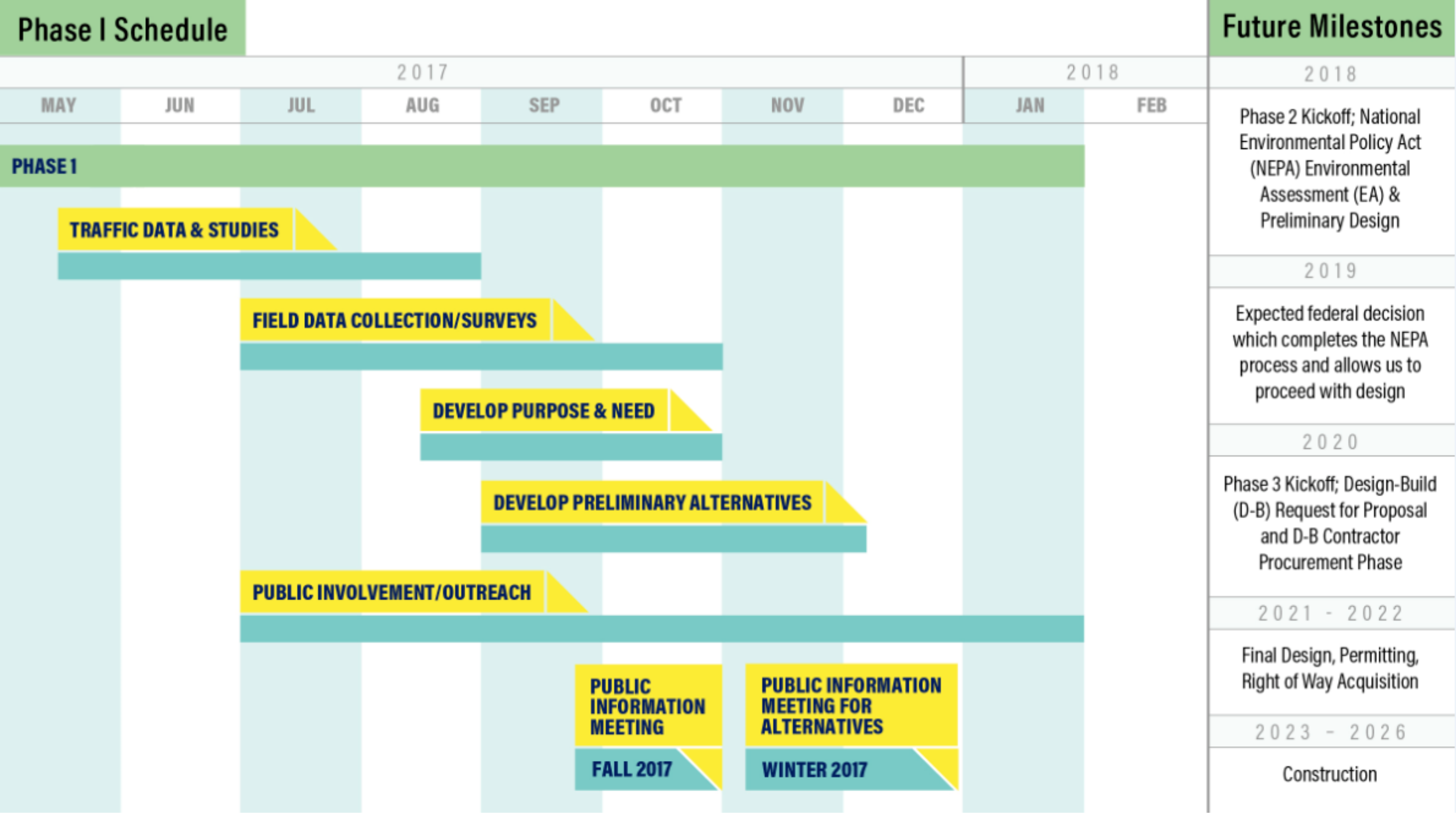
- Environmental Assessment or Impact Statement & Completion of NEPA process
- Perform preliminary alternatives development
- Conduct alternatives analysis
- Identify proposed alternative(s)

## PHASE 3

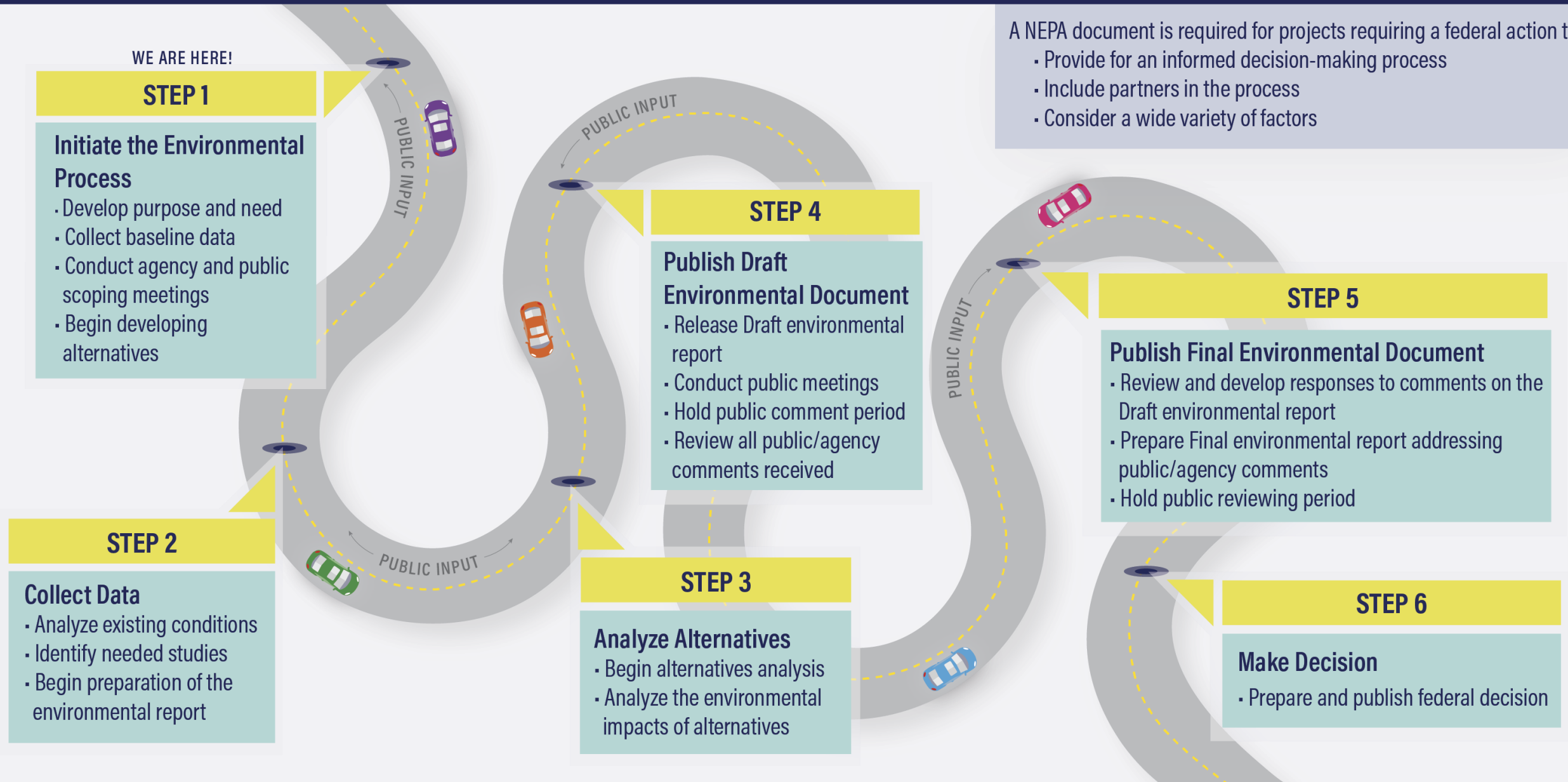
- Final Design and Permitting
- Procurement

## PHASE 4

- Construction



# National Environmental Policy Act (NEPA)



# Project Development

As part of the National Environmental Policy Act (NEPA) process, an extensive environmental review must take place before a project requiring a federal action can be designed and constructed.



# Factors examined in the environmental review:





# Scoping During the NEPA Phase

## Why do we do Scoping?

To take your feedback and define the focus of the study.

### Scoping is a process that:

- Involves the public and federal, state and local agencies
- Identifies issues in the environmental document
- Develops and evaluates alternatives in the development phase
- Defines the focus of the study

### Scoping identifies:

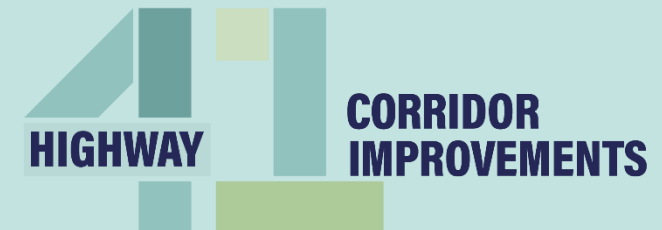
- Transportation deficiencies
- Study boundaries
- Reasonable alternatives
- Agency roles
- Environmental factors
- Permits

# Purpose & Need

The project's Purpose and Need statement will be developed with the project team, local and federal government agencies and additional stakeholders after the scoping process to state the problem and justify the need for the project.

## Preliminary Project Purpose & Need

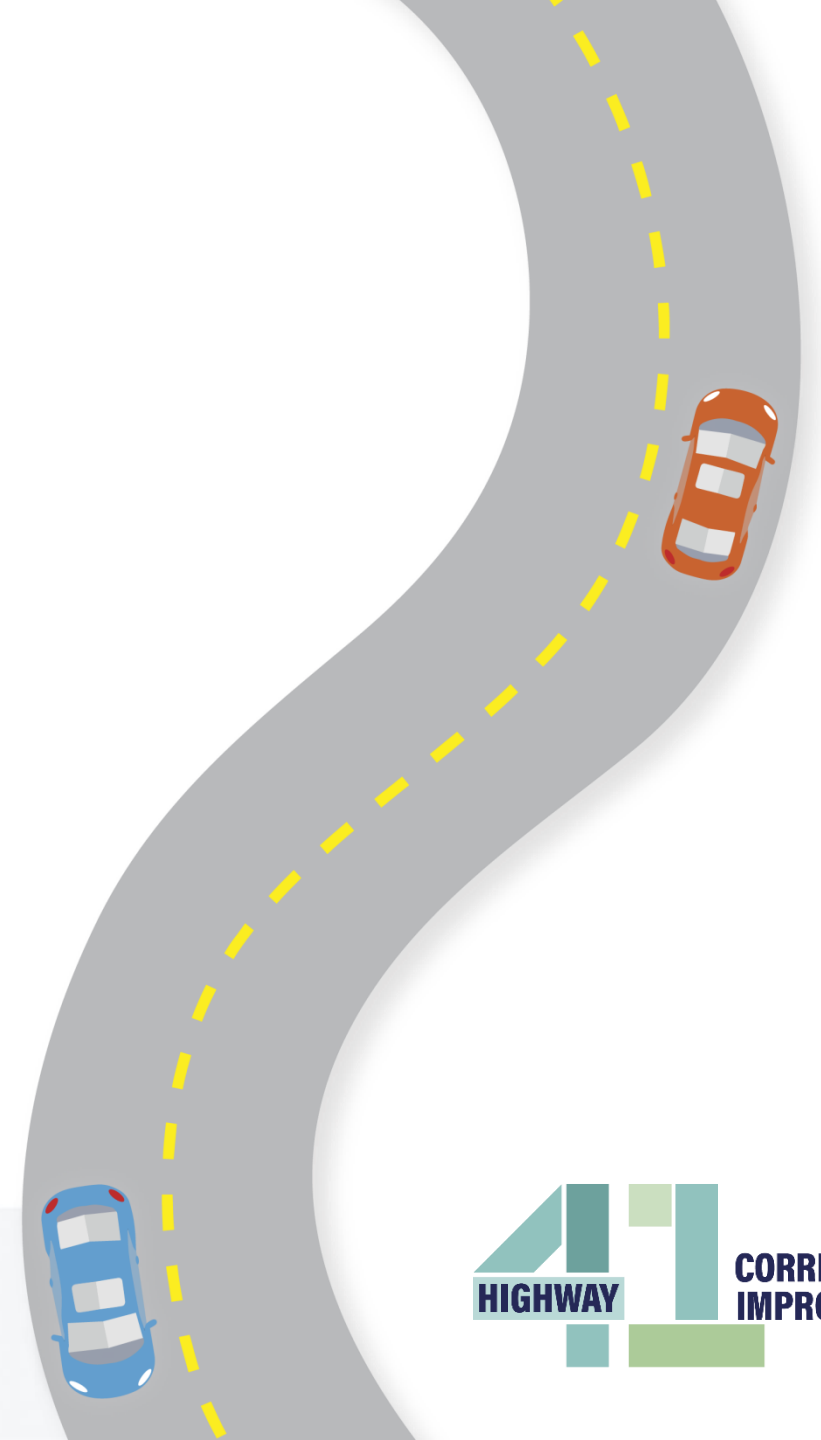
To reduce traffic congestion by improving the flow of traffic and capacity within the project corridor.



# Current Traffic Activities

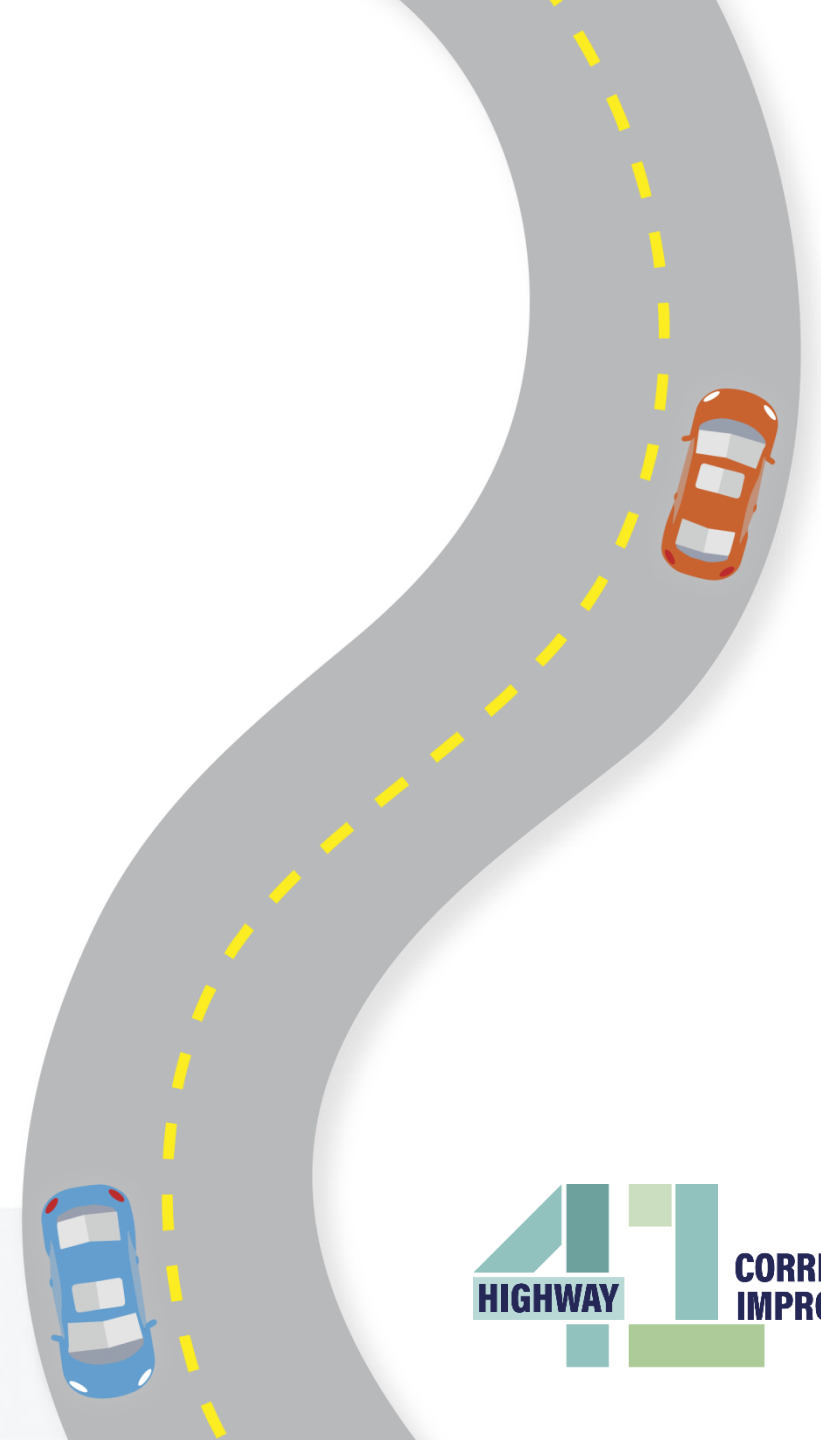
Gathering detailed growth information to include in the Charleston Area Transportation Study model:

- Highway 17 near Highway 41
- Along Highway 41 from Highway 17 to Joe Rouse Road and Bessemer Road
- Along Highway 41 from Joe Rouse Road and Bessemer Road to Clements Ferry Road
- Along Clements Ferry Road



# Future Traffic Activities

- Forecasting traffic volumes to future conditions (2045)
- Analyzing various alternatives using the Charleston Area Transportation Study model
- Analyzing alternatives for the intersection of Highway 41 and Highway 17





# Public Involvement & Outreach



- Public and Online Meetings
- Website
- Social Media
- Newsletters



- Visual Aids
- Email Correspondence
- Project Hotline
- Direct Mail



# Public Information Meetings

Two public meetings will be held in open house format during Phase I to provide information and receive comments on the project:



- **Fall 2017:** Public Scoping Meeting
- **Proposed Late 2017/Early 2018:** Public Meeting for Alternatives

# Online Meeting



- Complements any in-person public meeting
- Includes all in-person meeting materials
- Available through the project website: [www.hwy41sc.com](http://www.hwy41sc.com)
- Facilitates online comment submission
- Hosted on the project website for a 30-day comment period

# Top Comments to Date:



Traffic Safety



Bike/Ped Accommodations



Existing/Planned Utilities



Residential Areas



Schedule

\*As of 9/18/17



# FAQ: NEPA



## What is NEPA?

NEPA stands for the National Environmental Policy Act process. Under the NEPA process, an extensive environmental review must take place in order to complete a rigorous analysis of the project area and to examine reasonable alternatives for the improvements. The environmental review is done in order to avoid, minimize or mitigate environmental impacts and to ensure public participation is incorporated into the decision making process. Public input is critical during the environmental review process to provide important insight to Charleston County as the project plans and scope are refined.

# FAQ: Property



How will I know if my property will be impacted by the project?

Directly impacted landowners will be identified and contacted when a recommended preferred alternative is selected for this project.

# FAQ: Noise



How will you address noise impacts in the corridor?

Noise impacts are key factors that will be evaluated during the environmental review process. Data collected will be evaluated and mitigation measures, such as noise abatement, will then be considered based on physical or environmental constraints, cost effectiveness, and the viewpoints of the local community and residents.

# FAQ: Safety



Will this project address safety concerns? If so, how?

During the development of this project, safety concerns will be addressed through the implementation of current design standards, the addition of turn lanes, and implementation of pedestrian and bicycle accommodations.



# FAQ: Pedestrian and Bicycle Access



Will pedestrian and bicycle access be accommodated?

Improved access for pedestrians and bicyclists will be considered and evaluated in the project development process in order to provide safer options and more connectivity for residents.

# Contact Us



Visit: [www.Hwy41SC.com](http://www.Hwy41SC.com)



Email us to leave comments or  
join the project mailing list:  
**Hwy41SC@gmail.com**



Leave a message for the project  
team: **843-972-4403**



Follow Charleston County on  
**Facebook** and **Twitter**



**Cal Oyer, P.E.**

*Project Manager*

Charleston County Transportation Development

843-202-6148

[coyer@charlestoncounty.org](mailto:coyer@charlestoncounty.org)