



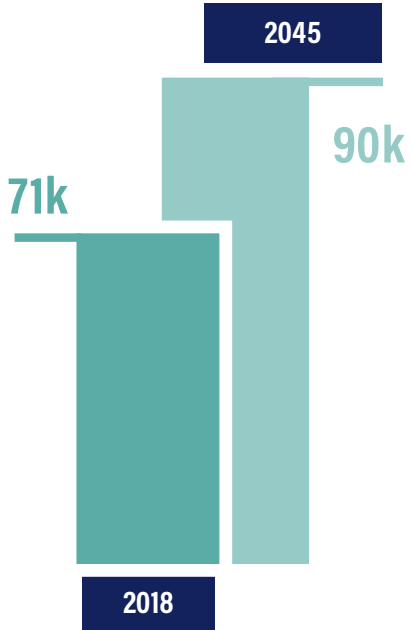
Highway 41 Overview and Update

March 4, 2021

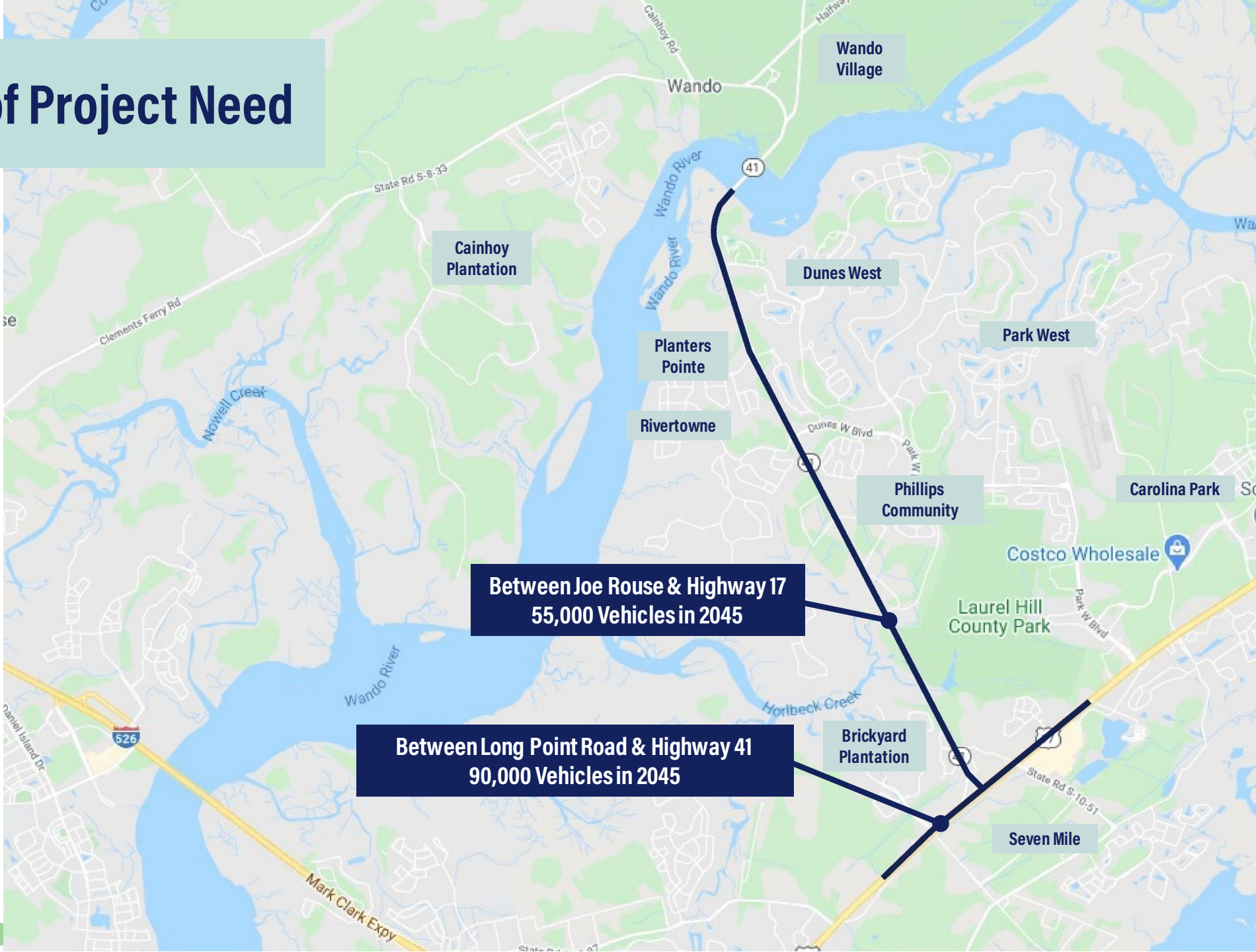




Overview of Project Need



Traffic projections for Highway 17 between Long Point Road and Highway 41



Purpose and Need

PRIMARY PURPOSE



Reduce congestion within the corridor



Accommodate future traffic projections

SECONDARY PURPOSE



Enhance safety throughout the corridor



Improve the transportation system and community connections



Provide bicycle and pedestrian accommodations



Minimize community and environmental impacts

ALTERNATIVES SCREENING PROCESS

PUBLIC TOUCHPOINTS

SCREENING

TIMELINE

SCREENING 1 > SCREENING 2 > SCREENING 3 > SCREENING 4

DEVELOP RANGE OF ALTERNATIVES

- Stakeholder Working Group Meetings
- Community Meetings
- Online Meeting
- Public Meeting

IDENTIFY REASONABLE ALTERNATIVES

- Online Meeting
- Public Meeting
- Stakeholder Working Group Meetings
- Community Meetings

REFINE THE LIST OF REASONABLE ALTERNATIVES

- Stakeholder Working Group Meetings
- Public Newsletters
- Community Meetings as requested/needed

FINALIZE REASONABLE ALTERNATIVES FOR ANALYSIS IN DRAFT REPORT

- Stakeholder Working Group Meetings
- Community Meetings

IDENTIFY PROPOSED ALTERNATIVE

- Virtual Meeting
- Stakeholder Working Group Meetings
- Community Meetings

ALTERNATIVE	1	ALTERNATIVE	7
ALTERNATIVE	2	ALTERNATIVE	8
ALTERNATIVE	3	ALTERNATIVE	9
ALTERNATIVE	4	ALTERNATIVE	10
ALTERNATIVE	5	ALTERNATIVE	11
ALTERNATIVE	6	ALTERNATIVE	12

ALTERNATIVE	1
ALTERNATIVE	2
ALTERNATIVE	7

ALTERNATIVE	1
ALTERNATIVE	2
ALTERNATIVE	2A
INTRODUCED ALTERNATIVE	5A
ALTERNATIVE	7
INTRODUCED ALTERNATIVE	7A

ALTERNATIVE	1
ALTERNATIVE	5A
ALTERNATIVE	7A

ALTERNATIVE	1
ALTERNATIVE	7A

JULY 2017 - MAY 2018 JUNE 2018 - FEBRUARY 2019 MARCH 2019 - AUGUST 2020

Alternative 1 and Alternative 7a

As presented to the public in August 2020



Widening Existing Highway 41 (Alternative 1)



New Location Along Dunes West BLVD. (Alternative 7a)



Proposed Alternative

Widening Existing Highway 41 (Alternative 1)



PROPOSED ALTERNATIVE HIGHLIGHTS



Greatest improved traffic times



Lowest overall project cost



Less effects from noise



Fewest impacts on wetlands

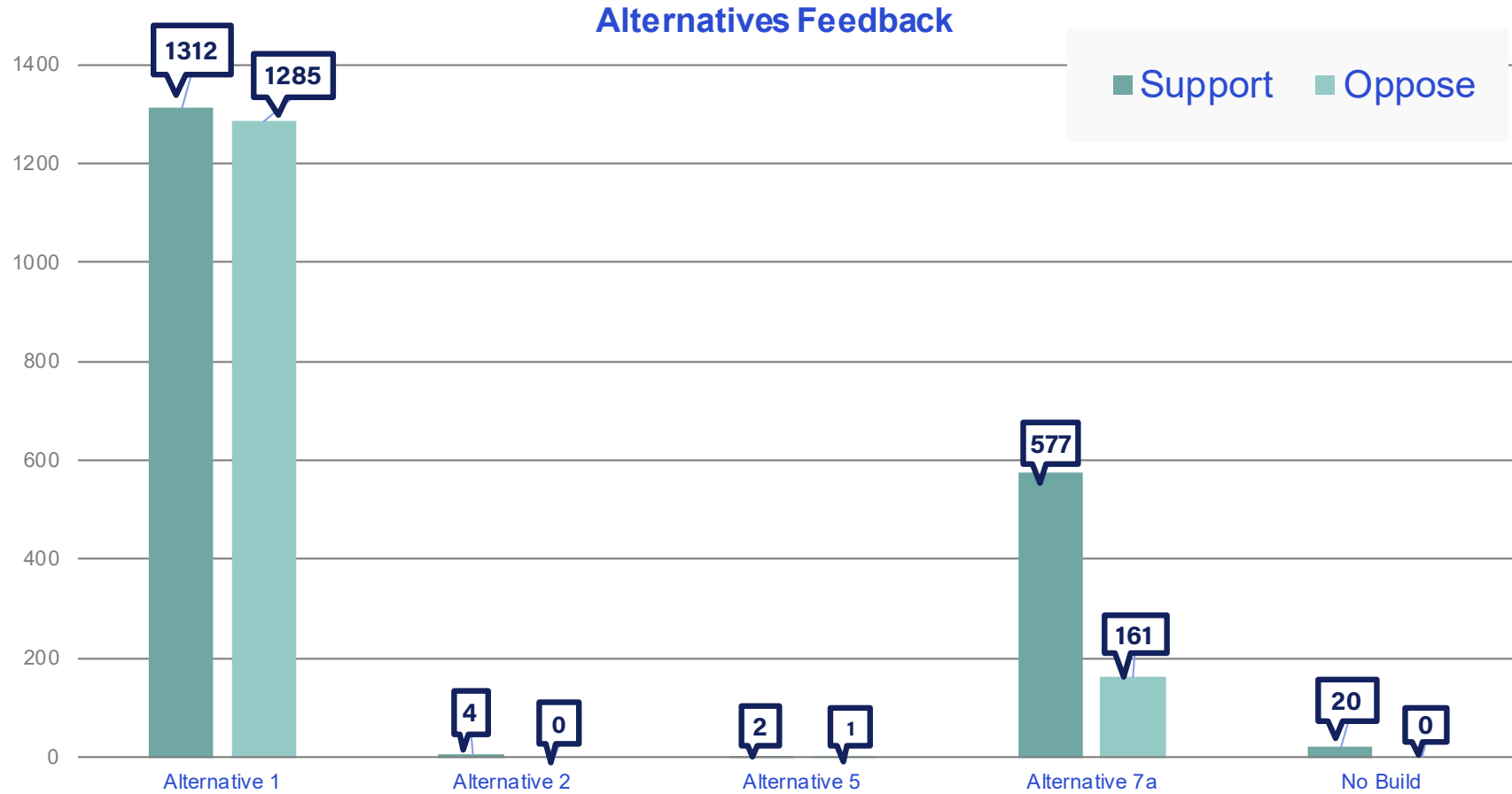


Fewer impacts on Laurel Hill County Park

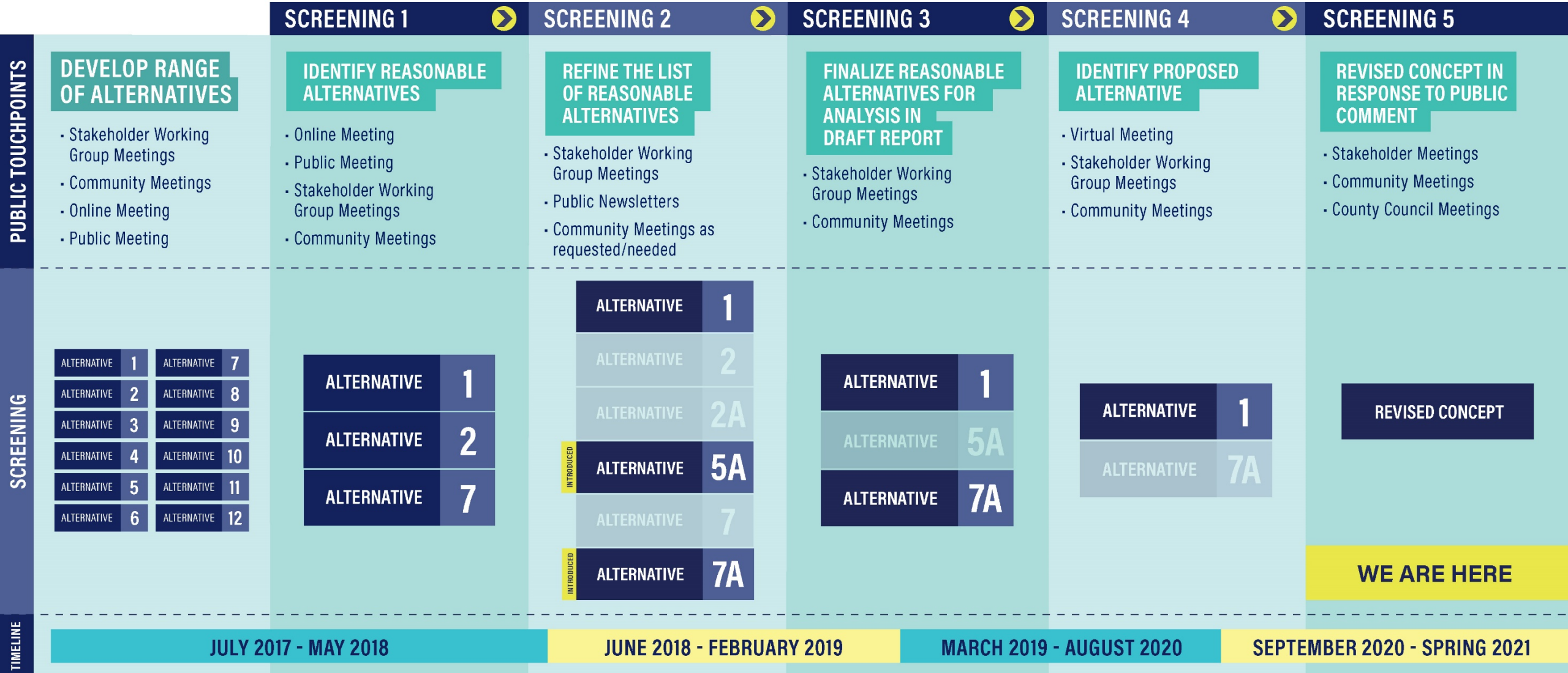
Public Comment Period: August 10 – September 13, 2020

<p>1,563 Web Form Comments</p>	<p>2,889 Total Comments Received</p>	<p>NGOs/Organizations We Heard From</p> <ol style="list-style-type: none"> 1. African American Settlement Community Historic Commission 2. Center for Heirs' Property Preservation 3. Charleston Moves 4. Charleston Trident Association of Realtors 5. Clemson University Professor 6. College of Charleston Professor 7. Community Action Group for Encouragement 8. East Cooper Land Trust 9. Heritage Communities Development Corporation 10. Historic Charleston Foundation 11. Lowcountry Land Trust 12. National Trust for Historic Preservation 13. Phillips Community Association 14. Preservation Society of Charleston 15. Research to Action Board 16. South Carolina Coastal Conservation League 17. Southern Environmental Law Center
<p>69 Hotline Voicemail</p>	<p>1,298 Southern Environmental Law Center Petition Signatures</p>	
<p>1,228 Emails</p>	<p>1,955 Change.org Petition Signatures</p>	
<p>29 Letter/Mail</p>	<p>53 Articles & Op-Eds to Date</p>	

Public Comment Period: August 10 - September 13, 2020



Alternatives Screening Process



Goals of Revised Concept



Meets purpose and need



Minimize impacts to the Phillips Community



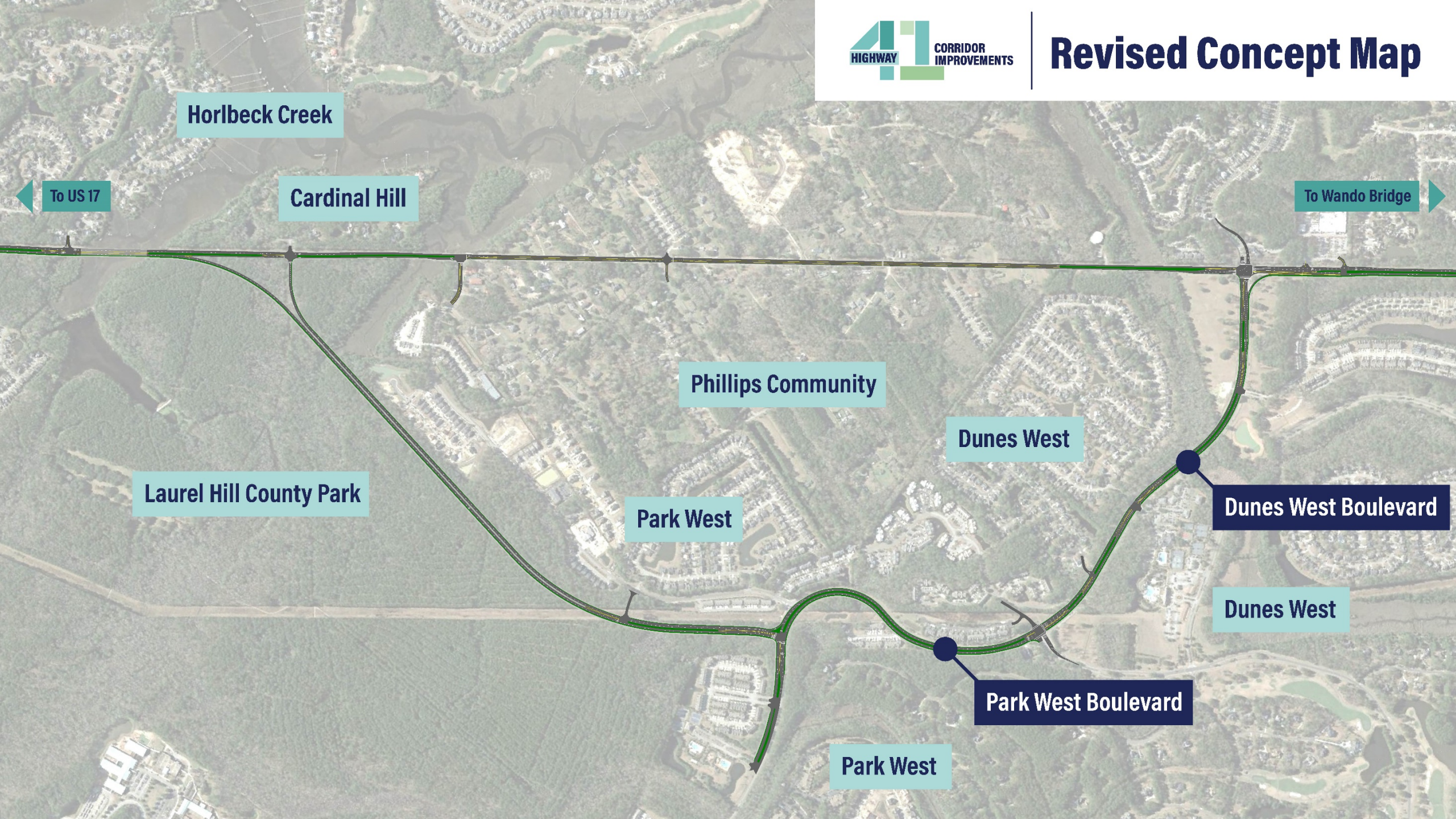
Enhance regional connectivity



Sensitive to the needs of all the surrounding communities



 Revised Concept



Horlbeck Creek

To US 17

Cardinal Hill

To Wando Bridge

Laurel Hill County Park

Phillips Community

Dunes West

Park West

Dunes West Boulevard

Dunes West

Park West Boulevard

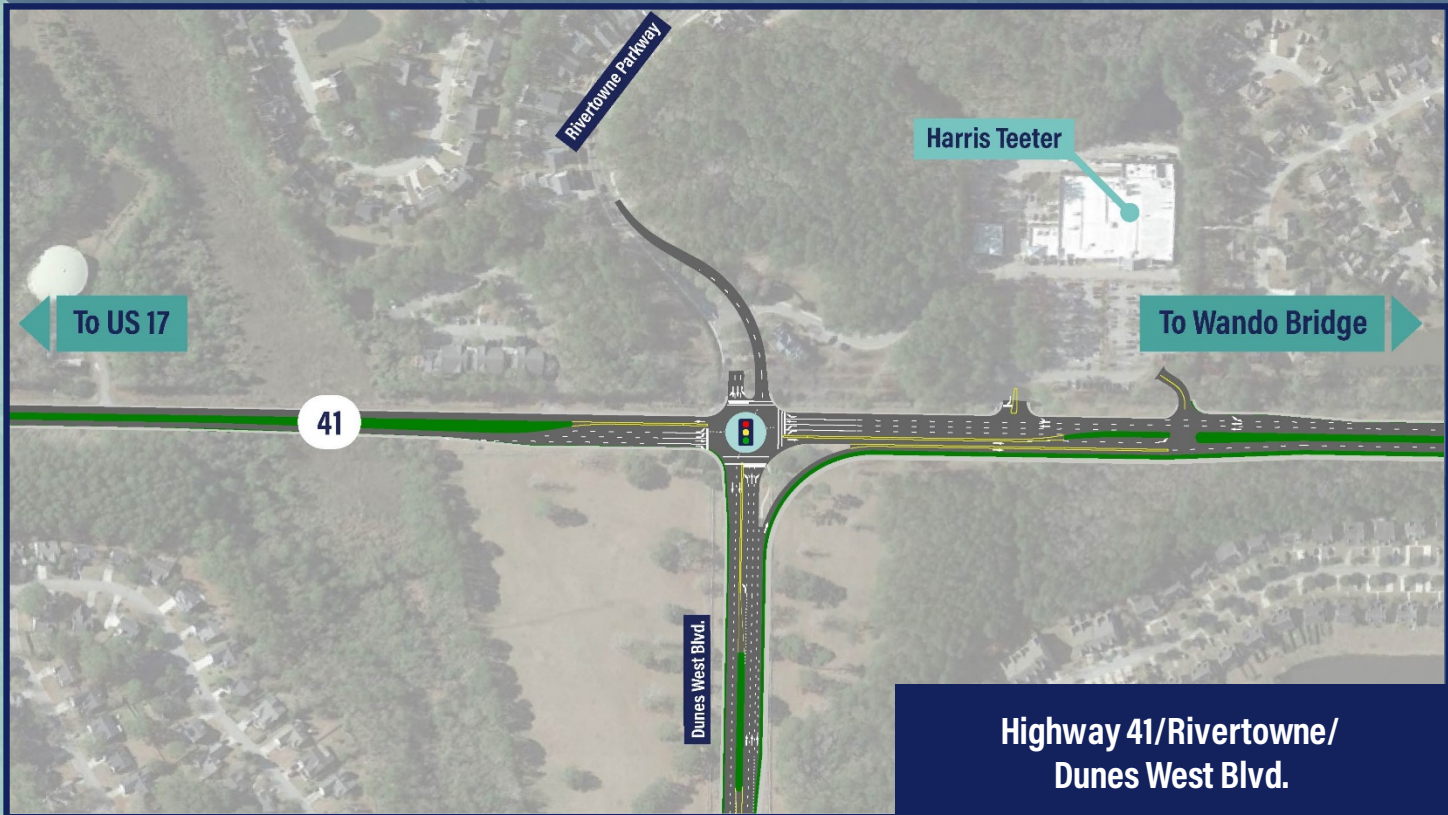
Park West

Horlbeck Creek

To US 17

Cardinal Hill

To Wando Bridge



Dunes West

Dunes West Boulevard

Dunes West

Park West Boulevard

Highway 41/Rivertowne/
Dunes West Blvd.

Park West

Horlbeck Creek

To US 17

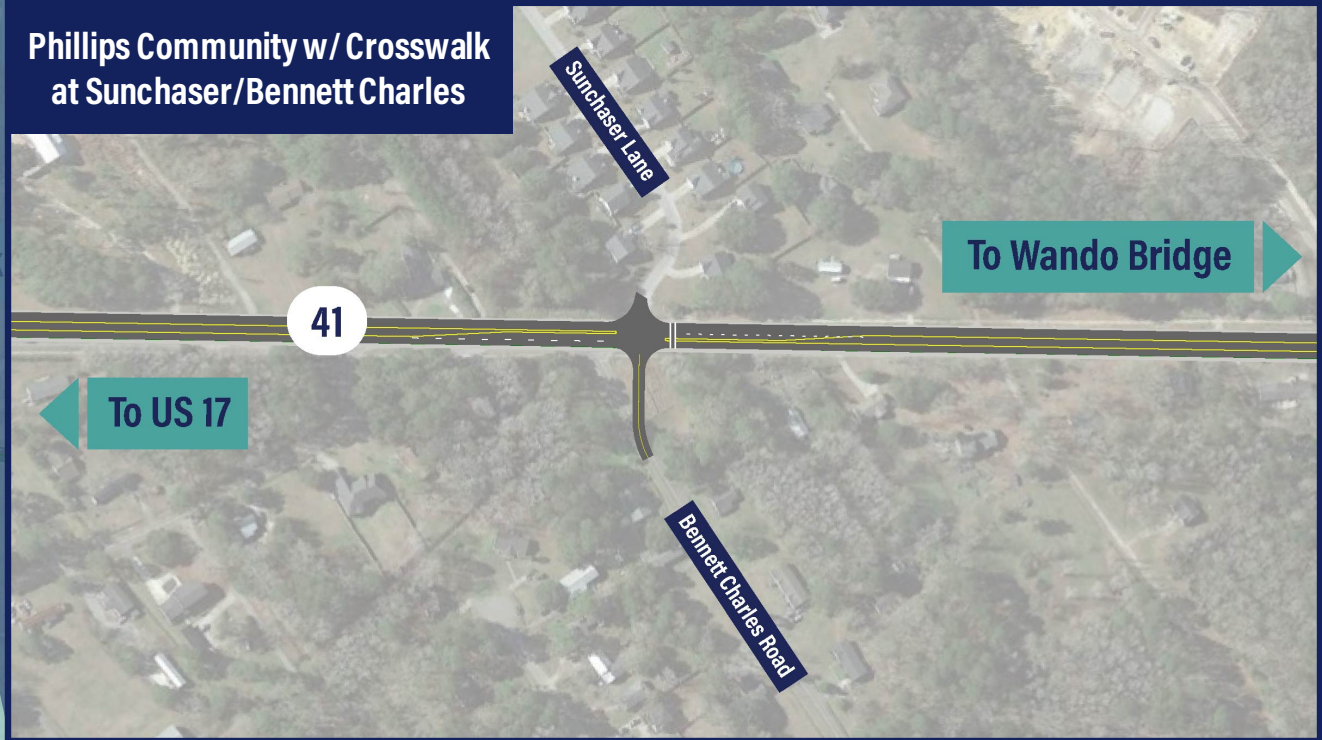
Cardinal Hill

To Wando Bridge



Laurel Hill County Park

Phillips Community w/ Crosswalk at Sunchaser/Bennett Charles



To Wando Bridge

To US 17

Horlbeck Creek

To US 17

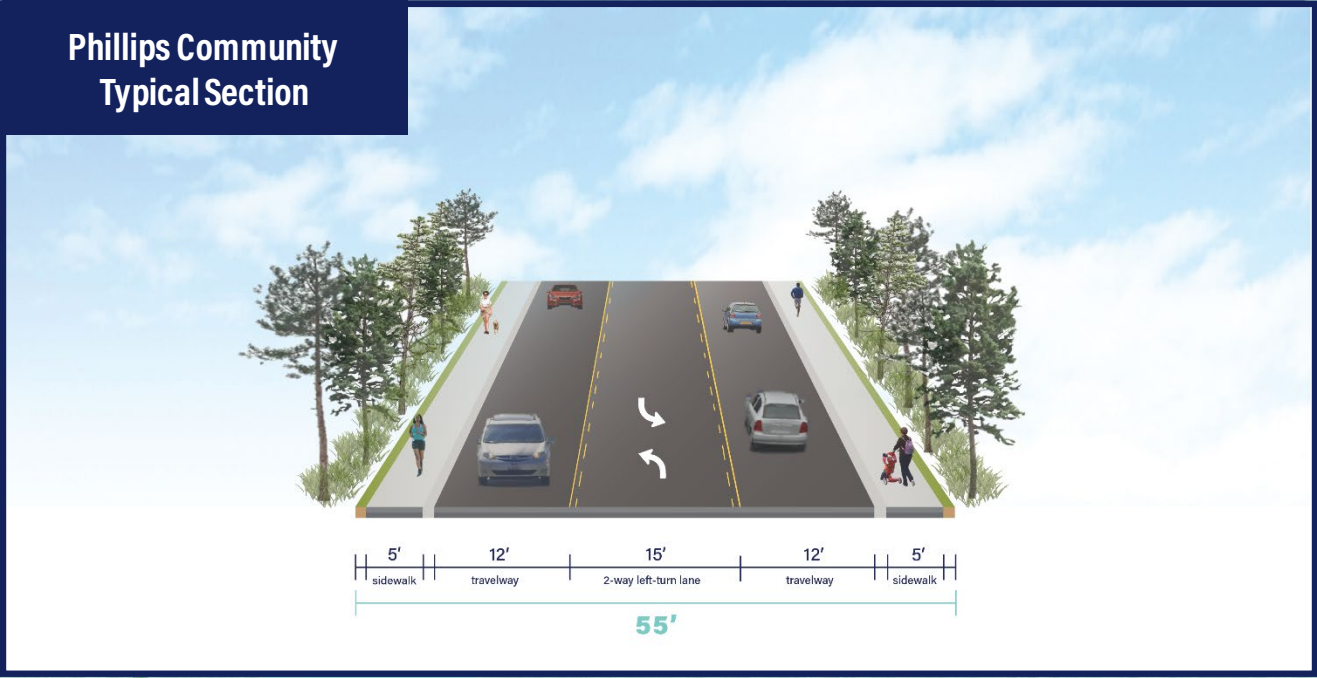
Cardinal Hill

To Wando Bridge

Laurel Hill County Park

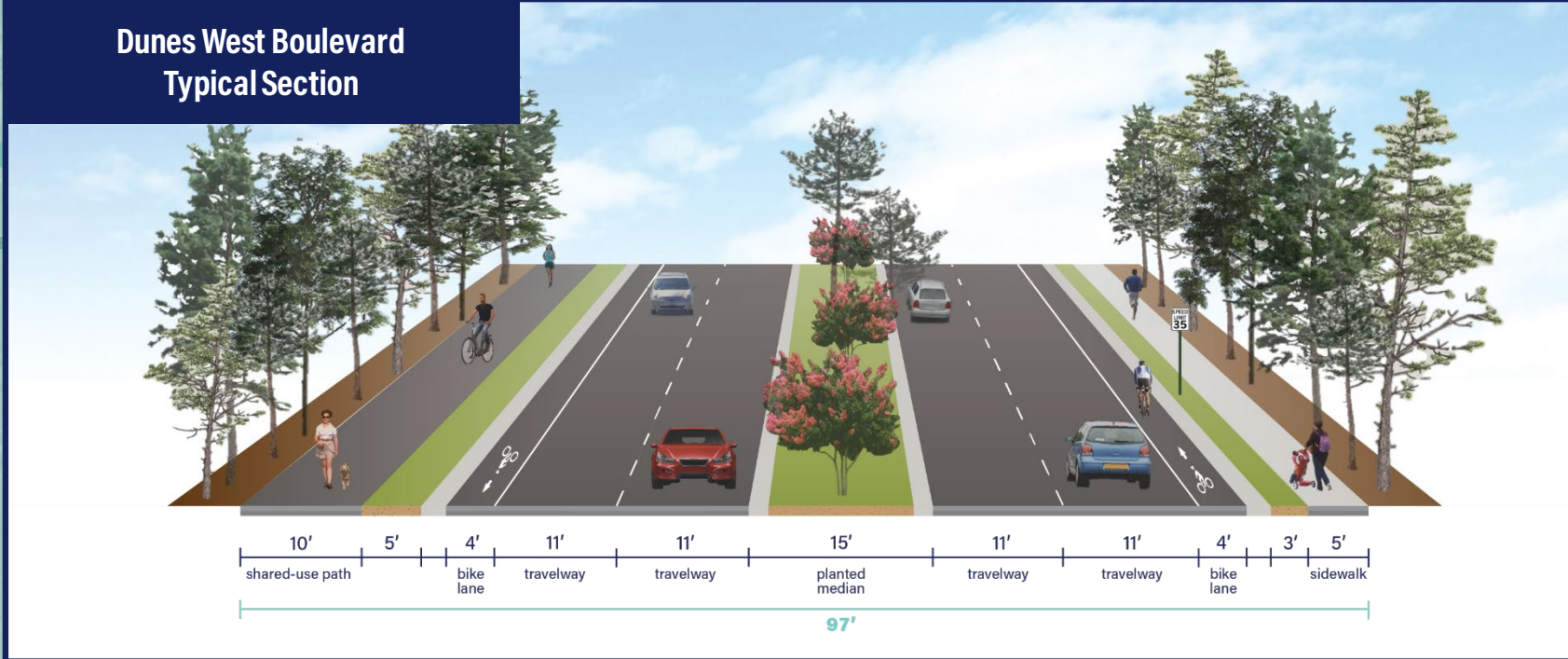


Phillips Community Typical Section



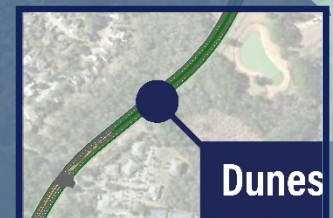
Park West

Dunes West Boulevard Typical Section



To Wando Bridge

Dunes West



Dunes West Boulevard

Park West

Dunes West

Park West Boulevard

Park West



Dunes West Blvd. / Wando Plantation Way

To US 17

To Highway 41

To Wando Bridge

Dunes West

Dunes West Boulevard

Dunes West

Park West Boulevard

Park West



**Park West Boulevard at
Bypass Road / Bessemer Road**



Park West Boulevard

Park West

Dunes West Boulevard

Dunes West

Dunes West

Park West

Laurel Hill County Park

Horlbeck Creek

To US 17

Cardinal Hill

To Wando Bridge



Laurel Hill County Park

Bypass and Cardinal Hill

Horlbeck Creek

Cardinal Hill

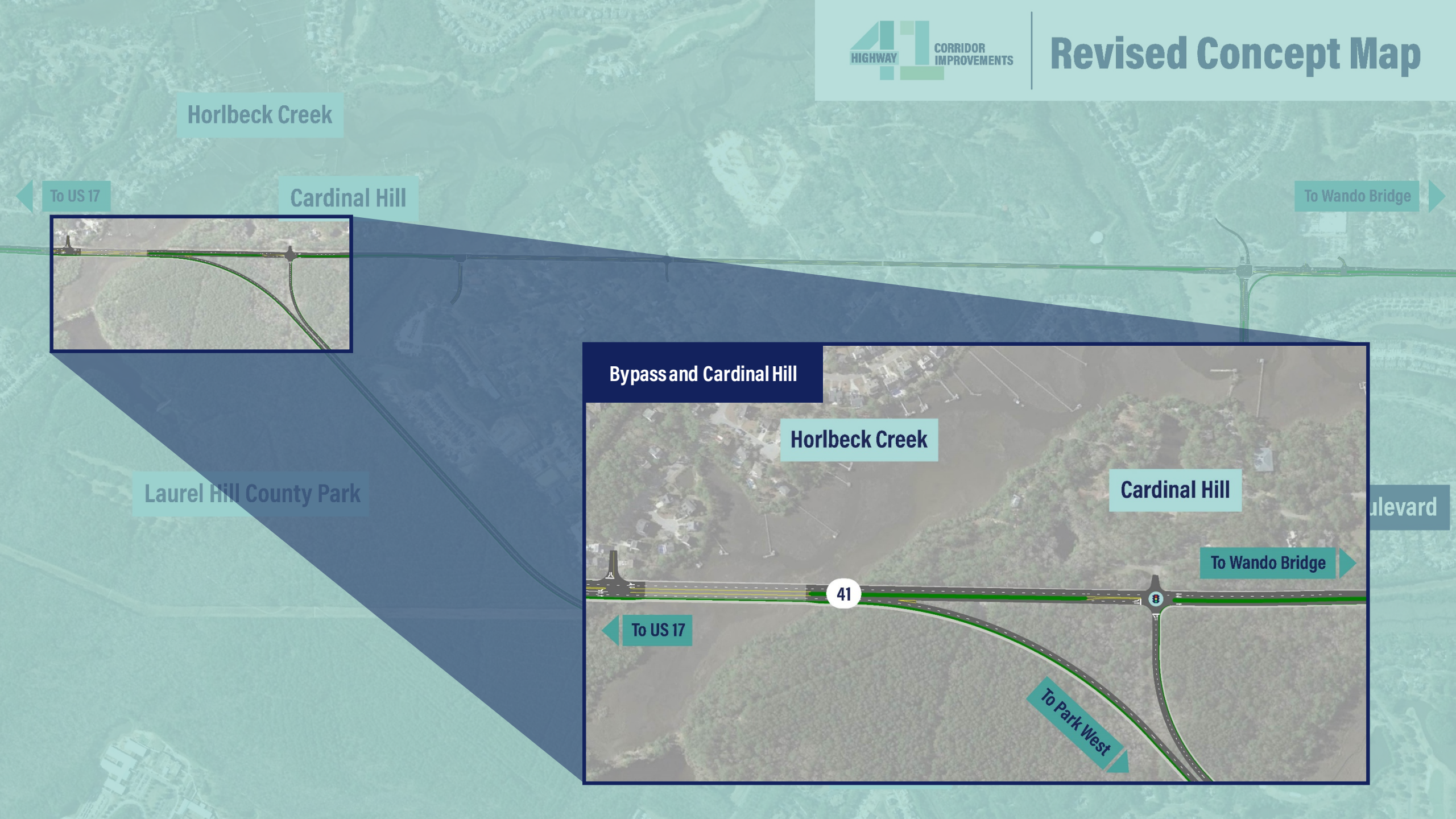
avenue

To Wando Bridge

To US 17

41

To Park West



Revised Concept Highlights

Revised Concept



REVISED CONCEPT HIGHLIGHTS



Meets purpose and need



Minimize impacts to the Phillips Community



Enhance regional connectivity




Sensitive to the needs of all the surrounding communities




Cost Estimate is \$187 million

Key Schedule Milestones

✓ County Council and Town of Mount Pleasant Meetings on Revised Concept – **March 2021**

 Community Meetings with Leadership – **March 2021**

 Prepare 30% Design for Revised Concept – **April to July 2021**

 USACE Permitting and 30-Day Public Notice – **August 2021 – 2023**

 ROW Plans Approved – **Summer 2022**

✓ ROW Complete – **Summer/Fall 2024**

 Begin Construction – **Early 2025**

Thank You

